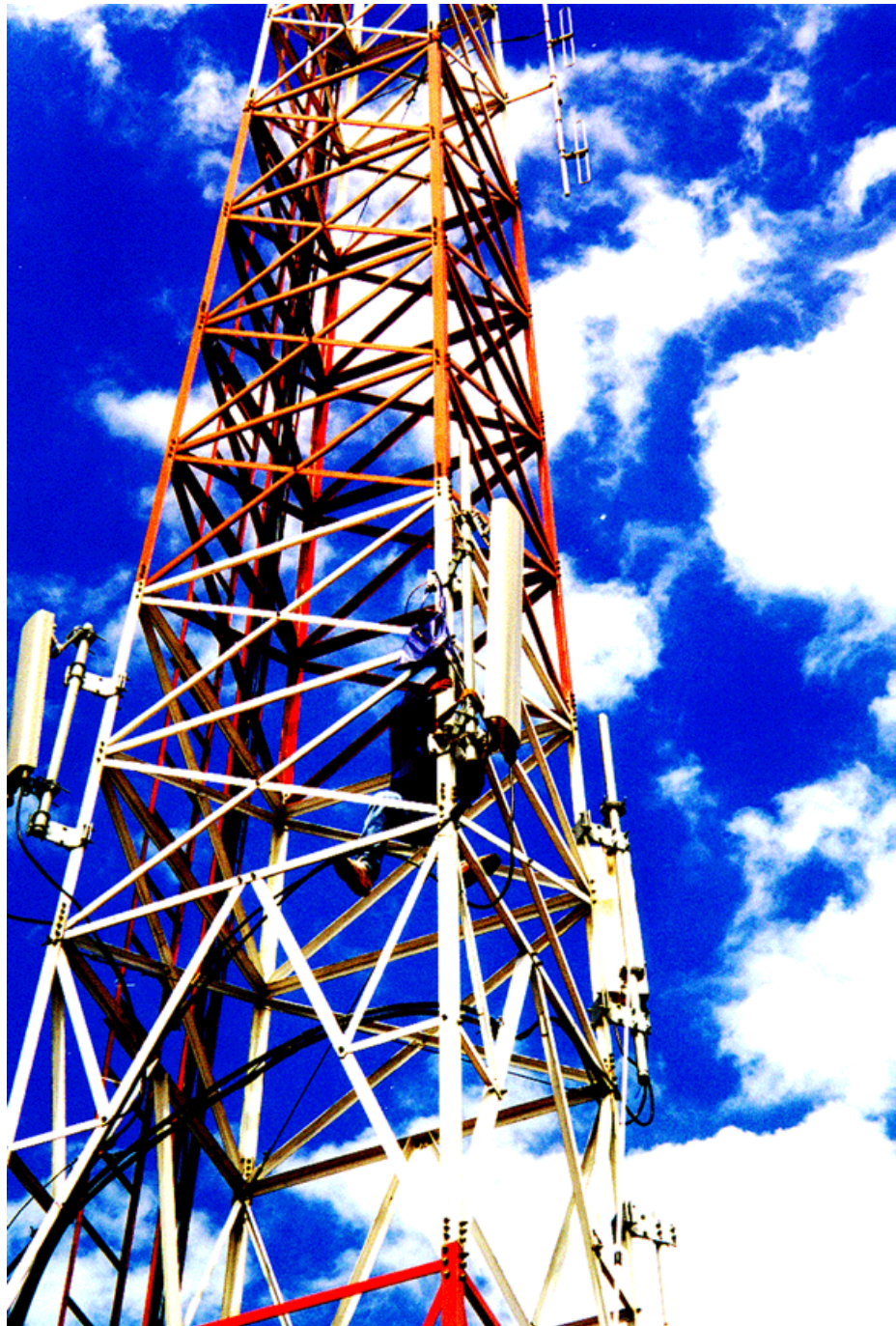




## High performance site components





## **Introduction**

**Egant AB is one of the leading suppliers of products for Cellular infrastructure.**

**Specialised in products that makes it possible to share antenna systems, combining signals and designing cost effective mobile networks.**

**Egant AB works close together with its customers to make solutions and projects optimized for today's demands.**

**Giving you products that is always in the latest design and highest technology.**

**Our design centre in Stockholm Sweden is always happy for new challenges and welcomes all new projects and design ideas.**

**More information can be found at: [www.egant.se](http://www.egant.se)**

### **EGANT AB**

Box 945

114 79 Stockholm

Sweden

Tel: +46 (0)8 6200 650

Email: [info@egant.se](mailto:info@egant.se)

Website: [www.egant.se](http://www.egant.se)



## GPS Amplifiers

[www.egant.se](http://www.egant.se)

### Frequency range

#### *GPS Amplifier*

1575,42MHz  
1575,42MHz  
1575,42MHz  
1575,42MHz

### Description

GPS Amplifier 70dB gain  
GPS Amplifier 80dB gain  
GPS Amplifier 90dB gain  
GPS Amplifier 100dB gain

### Connector Ordering number

N(f)-N(f) EG 698 0060  
N(f)-N(f) EG 698 0061  
N(f)-N(f) EG 698 0062  
N(f)-N(f) EG 698 0063

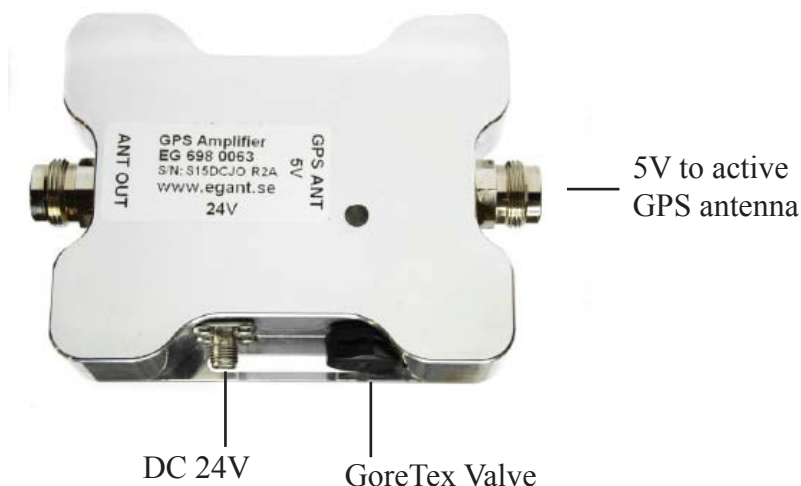


## Technical Specifications for the GPS Amplifier

Below are some typical data. For more detailed information, please contact us.

<b>Electrical Specifications</b>				
Product number:	EG 698 0060	EG 698 0061	EG 698 0062	EG 698 0063
Frequency:	1575.42±1.0MHz	1575.42±1.0MHz	1575.42±1.0MHz	1575.42±1.0MHz
Gain:	>70dB	>80dB	>90dB	>100dB
Adjustable Gain 15 steps -2dB/st	X	X	X	X
DC Input power:	24V 1A	24V 1A	24V 1A	24V 1A
Out of band rejection ± 100MHz	>70dB	>80dB	>90dB	>100dB
<b>Mechanical Specifications</b>				
Dimensions: (W x H x D)	115x24x80mm	115x24x80mm	115x24x80mm	115x24x80mm
Connectors RF:	N (f)	N (f)	N (f)	N (f)
Connector DC:	SMA (f)	SMA (f)	SMA (f)	SMA (f)
Weight:	0.4 Kg	0.4 Kg	0.4 Kg	0.4 Kg
<b>Environmental Specifications</b>				
Temp. range (normal operation):	-30 to +70° C	-30 to +70° C	-30 to +70° C	-30 to +70° C
Sealing:	IP65	IP65	IP65	IP65

Egant reserves the right to change this product specification at any time without notice.



### GPS Amplifier, gain adjustment.

Adjust the GPS Amplifier gain with the Hex code switch, located underneath the GoreTex valve.

### Gain Adjustment:

**0: Full power**

**1: -2dB**

**2: -4dB**

**3: -6dB**

**4: -8dB**

**5: -10dB**

**6: -12dB**

**7: -14dB**

**8: -16dB**

**9: -18dB**

**A: -20dB**

**B: -22dB**

**C: -24dB**

**D: -26dB**

**E: -28dB**

**F: -30dB**



Egant AB

Box 945

SE-114 79 Stockholm

Sweden

Phone: +46 (0)8 620 06 50

E-mail: info@egant.se

www.egant.se